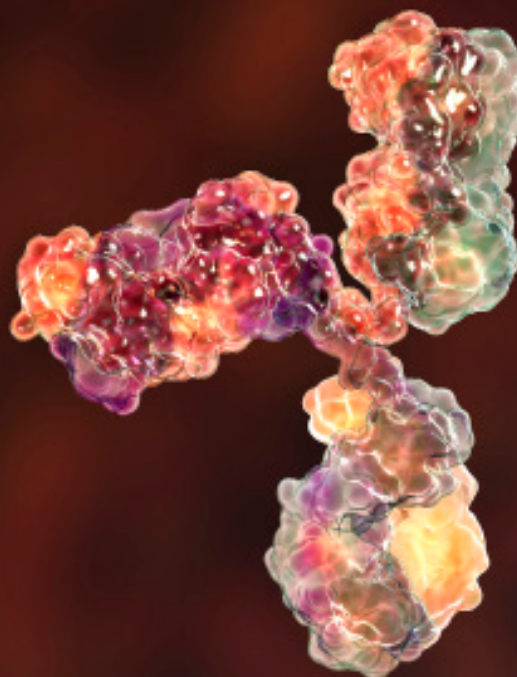


REAGENT SOLUTIONS FOR AUTOIMMUNITY RESEARCH



Like an army of experienced and disciplined soldiers, a healthy immune system fights pathogens or abnormal cells to protect the body against diseases. But if the immune system dysfunctions, it may mistakenly mount an attack against healthy cells, tissues, and ultimately organs. This means autoimmune diseases can affect any part of the body, weakening organism functions and even becoming life-threatening.

Over 80 autoimmune diseases have been reported to date, but no proven therapy has been found for any of them. Existing treatments target the inflammation in the body to reduce symptoms, but there is still no cure. Thus today's researchers are continuing to seek ways to efficiently combat these pathologies.

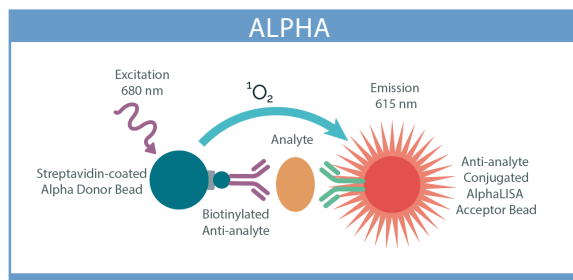
Advance your autoimmune disease research and benefit from PerkinElmer's broad offering of reagent technologies:

- A large biochemical assay portfolio, including cytokines, biomarkers, phosphoproteins, or protein-protein interactions
- Homogeneous easy-to-use immunoassay kits for cell-based detection of cytokines, biomarkers, and cell signaling proteins, which provide fast and accurate results utilizing Alpha and HTRF assay technologies
- Products covering all major inflammation pathways: STING -cGAS, NF-kB, JAK-STAT, BTK, ZAP-70

Two highly versatile technologies:

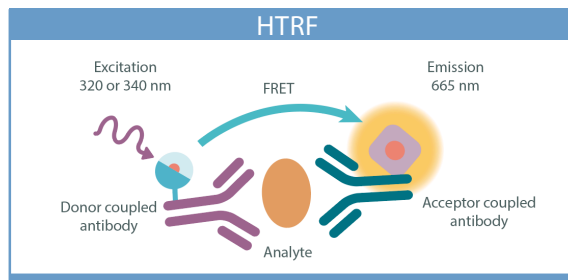
ALPHA TECHNOLOGY

Alpha is a versatile, bead-based platform that enables you to assay the most complex samples in one well and with no wash steps



HTRF TECHNOLOGY

HTRF is a fast, sensitive, homogeneous, and ready to use assay platform with no wash steps



CYTOKINES

	AlphaLISA [®]	AlphaPlex [™]	HTRF [™]
CCL2/MCP1	AL244C*		62HCCL2PEG*
CCL3/MIP-1α	AL257C		62HCCL3PEG
CCL5/RANTES	AL289C*		62HCCL5PEG
CXCL1/GROα	AL349C		62HCXC1PEG
CXCL4/PF4	AL398C		
CXCL9/MIG	AL280C		
CXCL10/IP-10	AL259C*	AP326SM-C	62HCX10PEG
CXCL11	AL260C		
CXCL13	AL3098C*		
G-CSF	AL213C		62HGCSFPEG
GM-CSF	AL216C		
GM-CSF2			62HGMCFSFPEG
IFN-α	AL297C*		62HIFNAPEG
IFN-β	AL3133C*		62HIFNBPEG*
IFN-γ	AL217C*	AP217SM-C	62HIFNGPEG*
IFN-γ Biotin free	AL327C		
IL-1α	AL238C		62HIL1APEG*
IL-1β	AL220C*	AP220SM-C	62HIL1BPEG*
IL-2	AL221C*	AP221SM-C	62HIL02PEG*
IL-2 Biotin-Free	AL333C		
IL-3	AL3134C*		
IL-4	AL266C*		62HIL04PEG
IL-5	AL267C*		62HIL05PEG
IL-6	AL223C*	AP223TB-C	62HIL06PEG*
IL-6 Biotin-Free	AL3025C		
IL-8	AL224C		62HIL08PEG
IL-8 Biotin free	AL328C		
IL-10	AL218C*		62HIL10PEG
IL-12			62HIL12PEG
IL-12/IL-23	AL382C		
IL-12/p70	AL3116C		
IL-13	AL240C*		62HIL13PEG
IL-17	AL219C*	AP219SM-C	62HIL17PEG*
IL-17A Biotin-Free	AL346C		
IL-17F	AL391C		
IL-18	AL3137C		62HIL18PEG
IL-18BP	AL3096C		
IL-23	AL3006C		62HIL23PEG
IL-25	AL3135C*		
IL-28B	AL365C		
IL-31	AL3003C		62HIL31PEG
IL-33	AL3042C*		
TGF-β			62HTGBPEG
TNF-α		AP208SM-C	
TNF-α	AL208C*		62HTNFAPEG*
TNF-α Biotin-Free	AL325C*		

500 assay points, other kit sizes are also available

Kits and references are indicated for human samples

**Also available for mouse*

Other species may also be available (bovine, porcine, cynomolgus...)

PHOSPHO-PROTEIN ASSAYS

	AlphaLISA [®] SureFire [™] Ultra [™]	AlphaLISA [®] SureFire [™] Ultra [™] Multiplex	HTRF [™]
AKT phospho-Ser473	ALSU-PAKT1-C500*		64AKSPEG*
AKT phospho-Thr308			64AKTPEG*
AKT1 phospho-Ser473			64AKT078PEG*
AKT2 phospho-Ser473			64AKT080PEG*
AKT3 phospho-Ser473			64AKT082PEG*
AKT 1/2/3 phospho-Ser473	ALSU-PAKT-B500*	MPSU-PTAKT-M500*	
AKT 1/2/3 phospho-Thr308	ALSU-PAKT-A500*		
BTK phospho-Tyr223	ALSU-PBTK-A500*	MPSU-PTBTK-K500*	63ADK017PEG
BTK phospho-Tyr551	ALSU-PBTK-B500*		63ADK064PEG
CREB phospho-Ser133	ALSU-PCREB-A500*		64CREPEG*
IKKβ phospho-Ser177/181			64KKBPEG*
IRF3 phospho-Ser385/386			6FRF3PEG
JNK phospho-T183/Tyr185	ALSU-PJNK-A500*		64JNKPEG
MKK4 phospho-Ser257	ALSU-PMKK4-A500*		64NK4PEG
MKK4 phospho-Ser258			64MK4PEG*
NFκB phospho-Ser536	ALSU-PNFκB-A500*	MPSU-PTNFκB-K500*	64NFβPEG*
p38 MAPK phospho-Thr180/Tyr182	ALSU-PP38-B500*		64P38PEG
PLCg1 phospho-Tyr783	ALSU-PPLCG1-A500		64PPLCG1Y3TDA*
PLCg1 phospho-Tyr1253	ALSU-PPLCG1-C500		
PLCg2 phospho-Tyr1214			64PPLCG2Y7PEG*
PLCg2 phospho-Tyr1217	ALSU-PPLCG2-D500		
SHP-1 phospho-Tyr536	ALSU-PSHP1-A500*		
SHP-1 phospho-Tyr564	ALSU-PSHP1-B500*		64SH1PEG*
SHP-2 phospho-Tyr542	ALSU-PSHP2-A500*		64SH2PEG*
SHP-2 phospho-Tyr580	ALSU-PSHP2-B500*		
SLP-76 phospho-Ser376	ALSU-PSLP-A500*		63ADK076PEG*
SLP-76 phospho-Ser376 (mouse)			63ADK109PEG*
STAT1 phospho-Ser727	ALSU-PST1-B500*		
STAT1 phospho-Tyr701	ALSU-PST1-A500*		63ADK026PEG*
STAT3 phospho-Tyr705	ALSU-PST3-A500*	MPSU-PTST3-K500*	62AT3PEG*
STAT5 phospho-Tyr694			64AT5PEG
STAT5 phospho-Tyr694/695		MPSU-PTST5-K500*	
STAT5 phospho-Tyr694/699	ALSU-PST5-B500*		
STAT6 phospho-Ser366			64AT6PEG
STAT6 phospho-Tyr641	ALSU-PST6-A500*		
STING phospho-Tyr641			64STGPEG*
SYK phospho-Tyr352	ALSU-PSYK-B500*		
SYK phospho-Tyr525			64SYKY525PEG*
SYK phospho-Tyr525/526	ALSU-PSYK-A500*	MPSU-PTSYP-K500*	

500 assay points, other kit sizes are also available

**Also available in total kits*

PPI & IMMUNE CHECKPOINT

	AlphaLISA*	HTRF*
4-1BB/4-1BBL binding kit	AL3113C	
B7-H5/VISTA detection kit	AL3059C	
BTLA detection kit	AL3062C	
CD276 detection kit	AL3060C	
CD28 detection kit	AL3044C	
CD28/CD86 binding kit	AL3131C	
CD40 detection kit	AL3102C	
CD47 / SIRP-α binding kit		64ISIRPPEG
CD70 detection kit	AL3103C	
CD80 detection kit	AL3055C	
CD86 detection kit	AL3045C	
CTLA4 detection kit	AL3050C	
CTLA4/CD80 binding kit	AL3046C	64CTLA80PEG
CTLA4/CD86 binding kit	AL3047C	64CTLA86PEG
FCGR1/CD64 binding kit	AL3081C	
FCGR2B/CD32b binding kit	AL3080C	
FCGR3A/CD16a (176Val/V158) binding kit	AL348C	
FcRn binding kit	AL3095C	64FCRNPET
FcγR2A/CD32a (167H) binding kit	AL3086C	
FcγR2A/CD32a (167R) binding kit	AL3087C	
FcγR3B (CD16b) binding kit	AL3094C	
Galectin-9 detection kit	AL3051C	
HLA-DRA/LAG3 binding kit	AL3066C	
IL6/IL6R binding kit		64BDIL6PEG
LAG3/MHC-II binding kit		64ICP03PEG
PD-1/PD-L1 binding kit	AL356C	64PD1PEG
PD-1/PD-L2 binding kit	AL3128C	
TIM-3 detection kit	AL3052C	
TNFα/TNFR1 binding kit	AL3120C	64BDTNFPEG
TNFα/TNFR2 binding kit	AL3121C	
500 assay points, other kit sizes are also available		

TOTAL PROTEIN ASSAYS

	AlphaLISA*	AlphaLISA* SureFire* Ultra™	HTRF*
ERK			64NRKPEG
IRAK3			63ADK101PEG
IRAK4	AL3117C	ALSU-TIRAK-A500	63ADK108PEG
STING		ALSU-TSTNG-A500	64NTGPEG
TBK1		ALSU-TTBK1-A500	64NTBPEG
500 assay points, other kit sizes are also available			

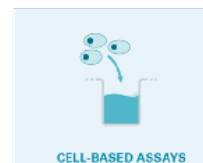
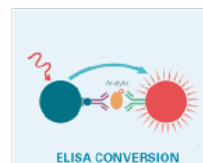
BIOMARKERS

	AlphaLISA*	HTRF*
HMGB1		62HMGPEG
Granzyme B (human)		62HGRZBPEG
MDA5		63ADK112PEG
MDA5 aggregation		63ADK111PEG
Perforin-1 (human)		63ADK100PEG
Cortisol	AL314C	62CRTPEG
Leukotriene B4		64LB4PEG
Leukotriene C4		64LC4PEG
500 assay points, other kit sizes are also available		

Custom Labeling and Custom Assay Development Services

Don't see the assay you need listed here? PerkinElmer has partnered with industry and academia professionals to develop custom solutions to dramatically shorten the drug development process using our powerful, accurate HTRF®, DELFIA® and AlphaLISA® technologies.

An experienced Project Manager will evaluate your project's chance of success, then work with you to create a customized assay for the target you need to advance your research.



Contact us today: www.cisbio.com/content/assay-development

PerkinElmer, Inc.
940 Winter Street
Waltham, MA 02451 USA
P: (800) 762-4000 or
(+1) 203-925-4602
www.perkinelmer.com



For a complete listing of our global offices, visit www.perkinelmer.com/ContactUs

Copyright © 2020, PerkinElmer, Inc. All rights reserved. PerkinElmer® is a registered trademark of PerkinElmer, Inc. All other trademarks are the property of their respective owners.